

OFFICIAL NCAA BASKETBALL BOX SCORE

Date 3-21-86 Site RUFF ARENA

VISITORS (Last Name, First)

No.	OWENSBORO	FG	FGA	FT	FTA	REB		PF	TP	MIN	A	TO	BLK	S	
						Off.	Def.								
24	HOGG, DAVID	f	7	11	6	12	3	3	2	20	30	1	2	0	1
34	JOHNSON, SCOTT	f	1	5	0	0	2	2	3	2	30	1	0	1	4
32	WHITE, MAURICE	c	6	8	4	8	0	1	1	16	26	1	1	0	1
21	ROBINSON, MARCUS	g	5	12	4	5	1	2	2	14	31	3	4	1	1
44	TAYLOR, AVERY	g	4	13	5	7	4	4	3	13	31	0	0	0	3
40	DOUGLAS, SCOTT										8				
14	BARKER, RICKY										0				
10	STEWART, ORLANDO	0	1								4				
52	PEWETT, DWIGHT														
30	EMBRY, CHAD														
12	WILSON, BRANDY														
42	ROBERTS, BRENT														
TEAM REBOUNDS (Included in Totals)						4	2								
TOTALS		23	50	19	32	14	14	11	65	160	6	7	2	10	

FG %: 1st Half $\frac{13}{30} = 43.3$ 2nd Half $\frac{10}{20} = 50\%$ Game $\frac{23}{50} = 46.2$ Deadball
 FT %: 1st Half $\frac{6}{13} = 46.1$ 2nd Half $\frac{13}{19} = 68.4$ Game $\frac{19}{32} = 59.4$ Rebounds 5

HOME

No.	HOPKINSVILLE	FG	FGA	FT	FTA	REB		PF	TP	MIN	A	TO	BLK	S	
						Off.	Def.								
52	PEACHERS, MIKE	f	5	8	0	1	0	3	3	10	31	0	2	0	0
34	QUARLES, JEFF	f	2	5	1	2	2	3	4	5	21	2	4	0	1
30	WARE, LAMONT	c	12	13	7	8	3	6	5	31	31	1	4	0	2
20	BINKLEY, JIMBO	g	3	7	1	2	1	1	4	7	24	1	3	0	0
44	CRUTCHFIELD, CHRIS	g	3	10	0	0	1	4	4	6	32	0	2	0	0
24	CALVERT, JOHN		1	1	0	0	0	1	0	2	11	0	0	0	1
10	BROWN, DAVID		1	3	0	0	0	1	2	2	10	0	3	0	0
40	LANGHI, DONNIE														
22	QUARLES, KENNY														
50	QUARLES, COREY														
42	BURRUS, GARY														
54	LANGHI, MIKE														
TEAM REBOUNDS (Included in Totals)						1	2								
TOTALS		27	47	9	13	8	21	22	63	160	4	18	0	4	

FG %: 1st Half $\frac{14}{29} = 48.3$ 2nd Half $\frac{13}{18} = 72.2$ Game $\frac{27}{47} = 57.4$ Deadball
 FT %: 1st Half $\frac{5}{8} = 62.5$ 2nd Half $\frac{4}{5} = 80$ Game $\frac{9}{13} = 69.2$ Rebounds 2

OFFICIALS: DON BYARS
JIM STEPHEN

SCORE BY PERIODS	1st H.	2nd H.	OT	OT	FINAL
OWENSBORO	15	17	16	17	65
HOPKINSVILLE	19	14	11	19	63

Technical Fouls: _____
 Attendance 18,000

ABBREVIATED HALFTIME BOX

Date 3-21-86

Crowd _____

	OWENSBORO		HOPKINSVILLE	
Halftime Score	32		33	
Field Goals Attempted	30		29	
Field Goals Made	13		14	
Field Goal Percentage	43.3%		48.3%	
Free Throws Attempted	13		8	
Free Throws Made	6		5	
Free Throws Percentage	46.1%		62.5%	
Rebounds (Total Individual)	14		15	
Individual Scoring Leaders	WHITE	10	WARE	20
	ROBINSON	10		
Individual Rebounds Leaders	TAYLOR	7	WARE	5
.Players with three or more personal fouls			QUARLES	3

Additional Information _____

ASSISTS 0 1

TURNOVERS 5 10

NCAA BASKETBALL SHOT CHART

14

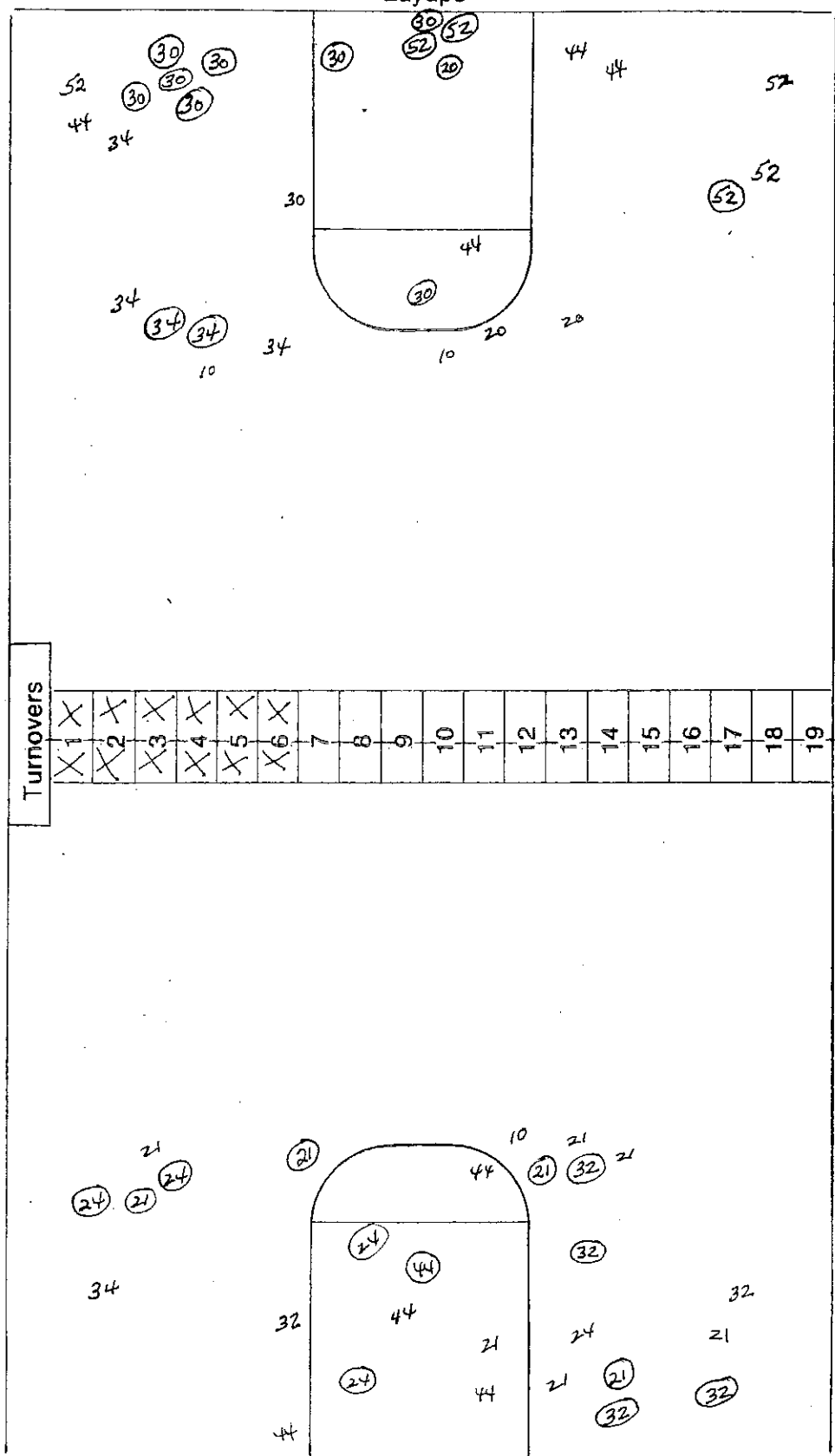
GAME 9

First Half

Second Half

(Circle one)

Layups



Team Hopkinsville 33

Team Owensboro 32

Attempted 29

Made 14

Percentage _____

Attempted 28

Made 13

Percentage _____

Layups

NCAA BASKETBALL SHOT CHART

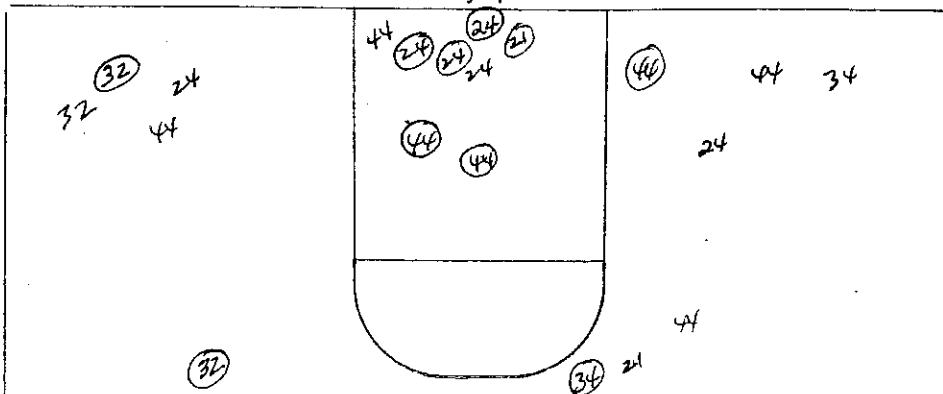
First Half

Second Half

(Circle one)

GAME 9

Layups



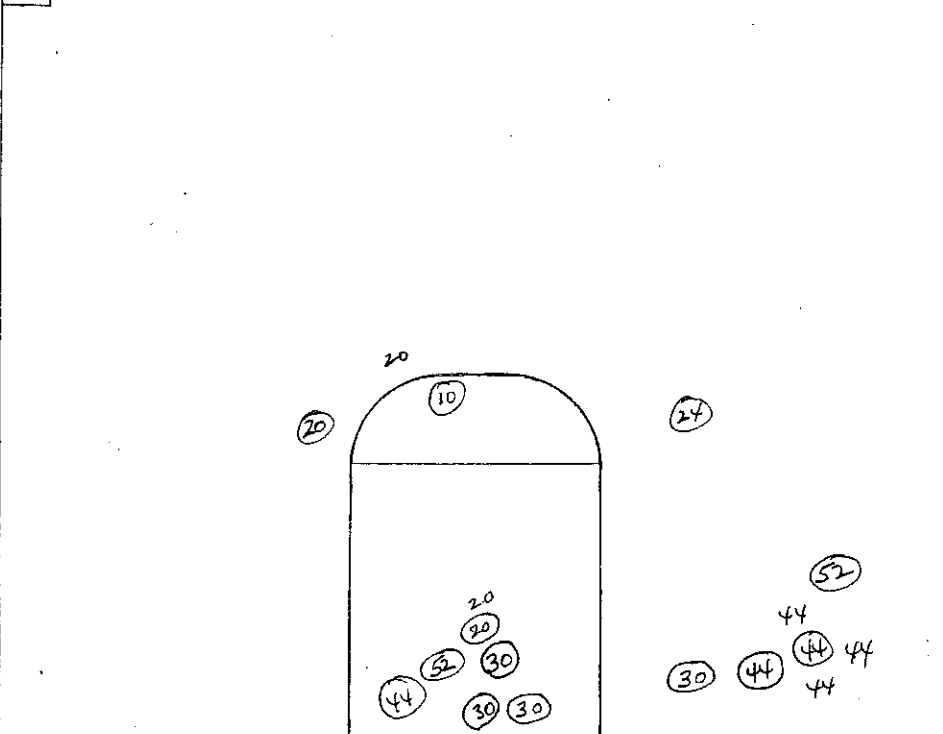
Attempted 20

Made ~~10~~ 10

Percentage _____

Turnovers	1	X	2	X	3	X	4	X	5	X	6	X	7		8		9		10		11		12		13		14		15		16		17		18		19	
		X	X	X	X	X	X	X	X	X	X	X	X	X	X	X	X	X	X	X	X	X	X	X	X	X	X	X	X	X	X	X	X	X	X	X	X	X

Team Hopkinsville 63



Attempted 18

Made 13

Percentage _____

Layups

69th Boy's State High School Basketball Tournament
 Owensboro (31-0) vs Hopkinsville (30-4)
 Rupp Arena: Lexington, Ky.
 March 21, 1986

Session Five

Officials: Donnie Byars and Jim Stethen

Time	Owensboro play	First Quarter		Hopkinsville play
			Score	
8:00	Starters: Hogg, Johnson, Taylor White, and Robinson		00-00	Starters: Ware, Crutchfield, Peachers, J. Quarles, and Binkley
7:50	Ware 12 ft L baseline		02-02	Ware 12 ft L baseline
7:07	Taylor fouls P1, T1		02-13	J. Quarles fta-ft
6:58	Robinson P1, T2		0-5	Ware layup fta
6:50			0-7	Peachers 15 ft R side (Binkley)
6:30				Crutchfield P1, T1
6:01	Robinson 16 ft. jump shot		2-7	
5:37	Robinson 10 ft bank shot ft		5-7	Binkley P2, T2
5:29				Ware P1, T3 (player Control)
5:14	White from the L corner		7-7	
4:56	Hogg P1, T3		7-9	Peachers layup fta
3:58			7-11	Ware 8 ft L baseline (Peachers)
3:45	Hogg fta-ft		8-11	Quarles P1, T4
3:23			8-13	Quarles bombs from 19 ft (Binkley)
2:51	Hogg long range 21 ft jumper		10-13	
2:19			10-15	Ware short jumper
2:13	White fta-fta			Binkley P2, T5 (BONUS)
2:01			10-17	Quarles 17 ft jump shot L side
1:42	Hogg works inside for layup		12-17	
1:20	White pulls up from 12 ft		14-17	
0:43	White ft+fta		15-17	Quarles P2, B
0:02			15-19	Peachers takes long pass from Ware-layup

Second Quarter

7:47		15-21	Ware moves to the L baseline
7:33	Taylor 6 ft in the lane (Robinson)	17-21	
7:15		17-23	Ware 15 ft turn around on baseline
6:31	Robinson 18 ft jumper R-side--(Taylor)	19-23	
5:26	Hogg stops at 20 ft for jump shot	21-23	
4:58	Taylor P2, T4		
4:29	Hogg fta-ft	22-23	Brown P1
4:20		22-25	Ware 12 ft from the paint
3:59	White ft-fta	23-25	Crutchfield P2
3:32	Taylor kicks the ball back to Taylor for 12 ft jumper		
3:02	White pulls up on the baseline	25-25	
2:26		27-25	
2:10	Robinson ft-fta	27-27	Ware layup
1:52	Hogg hangs in the air to hit from lane	28-27	Quarles P3
1:33	Johnson P1, T5 BONUS	30-27	
1:17		30-29	Ware ft+ft
1:00	White 17 ft jumper L side	30-31	Binkley on the fastbreak spins and hits
0:38	White RQ P1	32-31	
		32-32	Ware ft-ft

HALF

Lead changes - 4
 Ties - 3

60th Boy's State High School Basketball Tournament
 Owensboro vs Hopkinsville

Third Quarter

Time	Owensboro play	Score	Hopkinsville play
8:00		32 8 -33	
7:51	XHogg takes the alley oop from Robinson	34-33	
7:19			Ware P2, T1
7:10	Hogg P2, T1		Ware gets the rebound and goes coast-to-coast for two ft
6:45	Hogg fta-ft	34 4 -36	Peachers P1, X X T2
6:03	Johnson 17 ft jumper (Hogg)	35-36	
5:40	Hogg ft-fta	37 8 X -36	
5:12		38-36	Crutchfield P3, T3
4:43	White 16 ft jump shot	38-38	Ware rebound follow shot
4:31		40-38	
4:09	Hogg layup (Robinson)	40-40	Binkley 12 ft jumper R side
3:50	Johnson P2, T2	42-40	
3:30			Ware P3, T4
3:11	Taylor ft+ft	44-40	Quarles P4, T5 BONUS
3:02			Peachers P2 (player control)
2:31	White hits high arching jumper from 18 ft	46-40	
2:05		46 X 42	Crutchfield 12 ft L side
1:41	Hogg workd the rebound in	48-42	
1:27		48-44	Crutchfield layup

Fourth Quarter

7:03		48-46	Crutchfield 14 ft L baseline (Calvert)
6:20	Taylor from the paint (Robinson)	50-48 6	
6:03		50-48	Calvert hits radar jumper (Crutchfield)
5:32		50-50	Ware goes up, and up, and up for lob (Binkley)
5:11	Taylor 5 ft B side	52-50	
4:55	Taylor P3, T3	52-51	Binkley fta-ft
4:32	Robinson P2, T4		
4:13	Robinson layup (White)	54-51	
4:03	Johnson P 2 3, T5 BONUS	54-53	Ware ft+ft
3:38			X Ware P4
	Taylor fta-ft	55-53	Hopkinsville (1) Timeout
2:45		55-55	Ware skys for another Binkley lob-layup
2:24	Taylor puts it in ft		Crutchfield P4
2:10		58-55	Hopkinsville Timeout (2)
1:54	Hogg ft+fta	58-57	Peachers 17 ft jump shot (Quarles)
0:40	Hogg will shoot after the timeout	59-57	Peachers P3, B
	Hogg ft+fta		Binkley P3, B
0:30	Taylor ft+fta	60-57	Hopkinsville Timeout (3)
0:24		61-57	Ware P5, B
0:20	Owensboro Timeout (1)	61-59	Peachers layup (Quarles)
0:17	Robinson ft+ft	63-59	Binkley P4, B
0:12		63-61	Binkley tips in his own miss
0:11			Hopkinsville Timeout (4)
0:10	White ft+ft (second shot after T/O)	65-61	Brown P2, B
0:05	Owensboro Timeout (2)		
0:05		65-63	Brown from the top of the circle

FINAL

Owensboro (32-4)

65-63

Hopkinsville (30-5)

Lead changes - 7

Ties - 7